

2023.2.1 R4本試験 解説

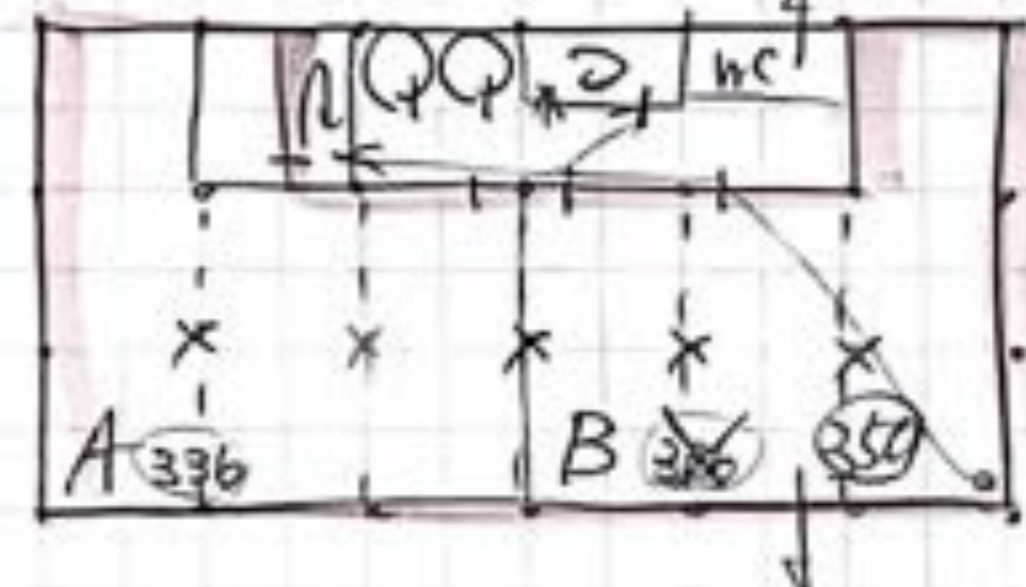
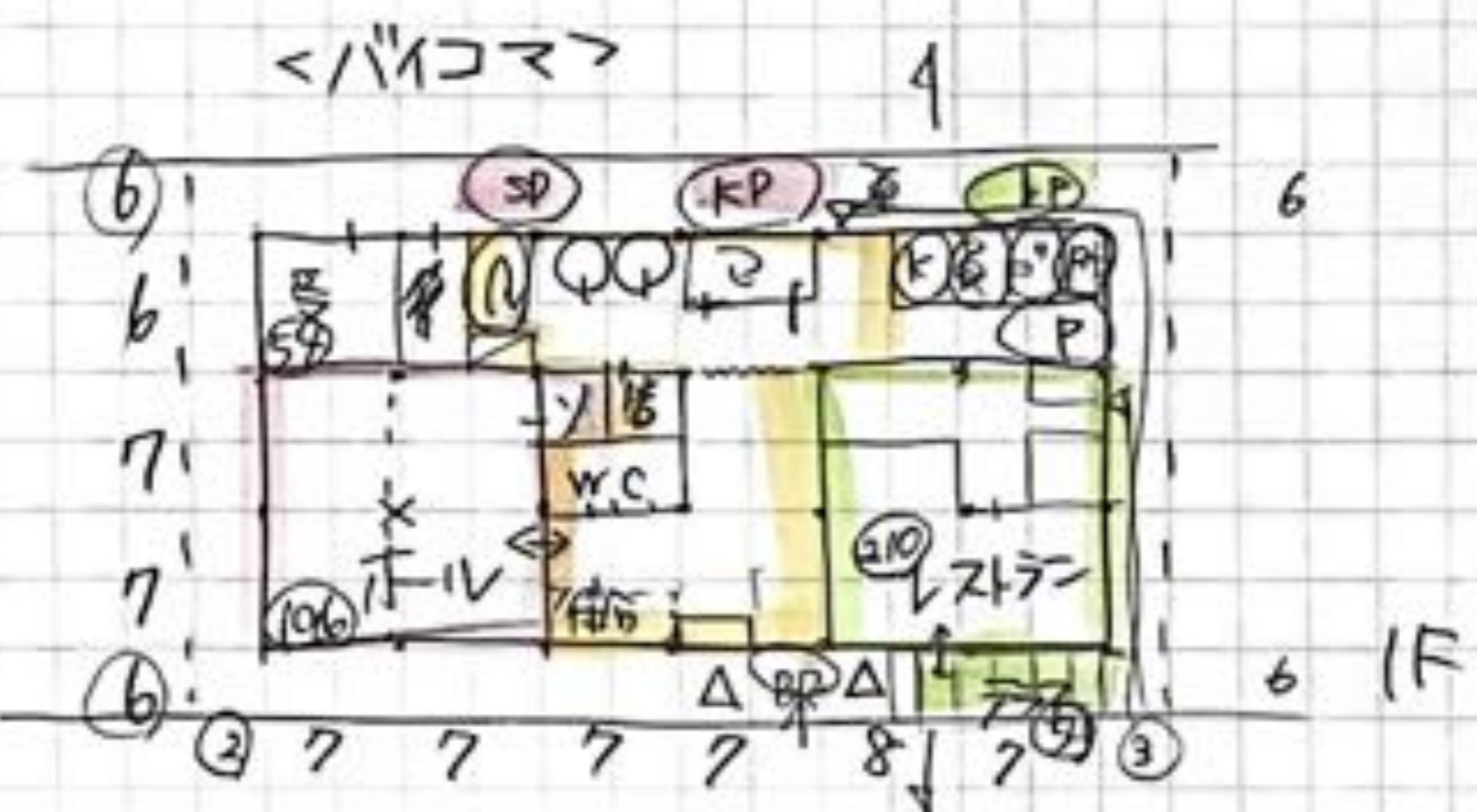
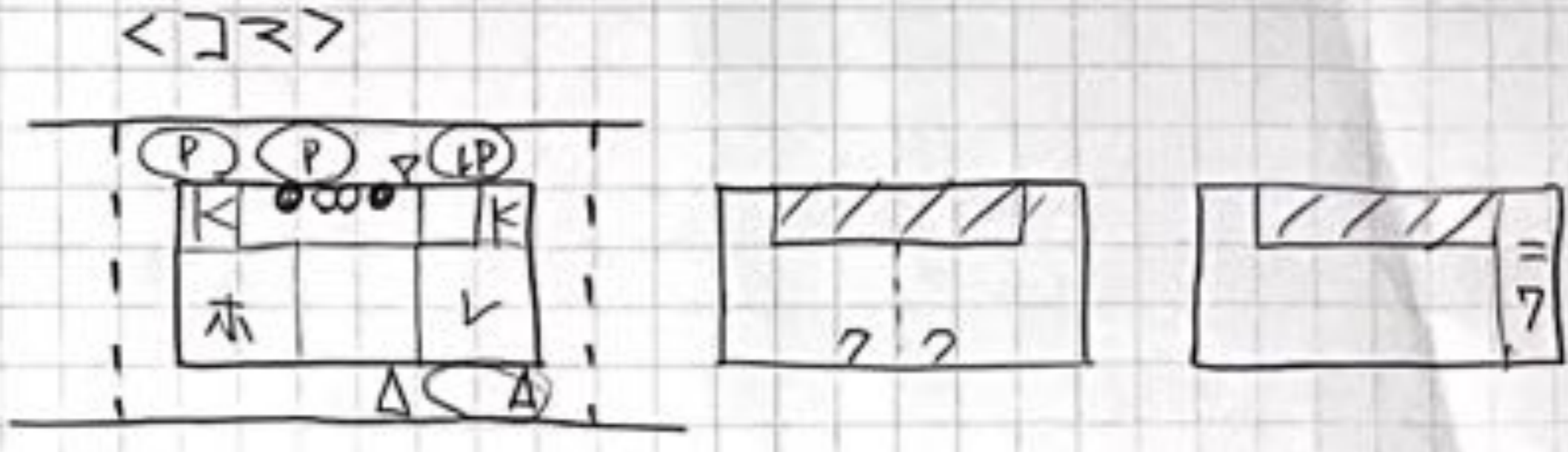
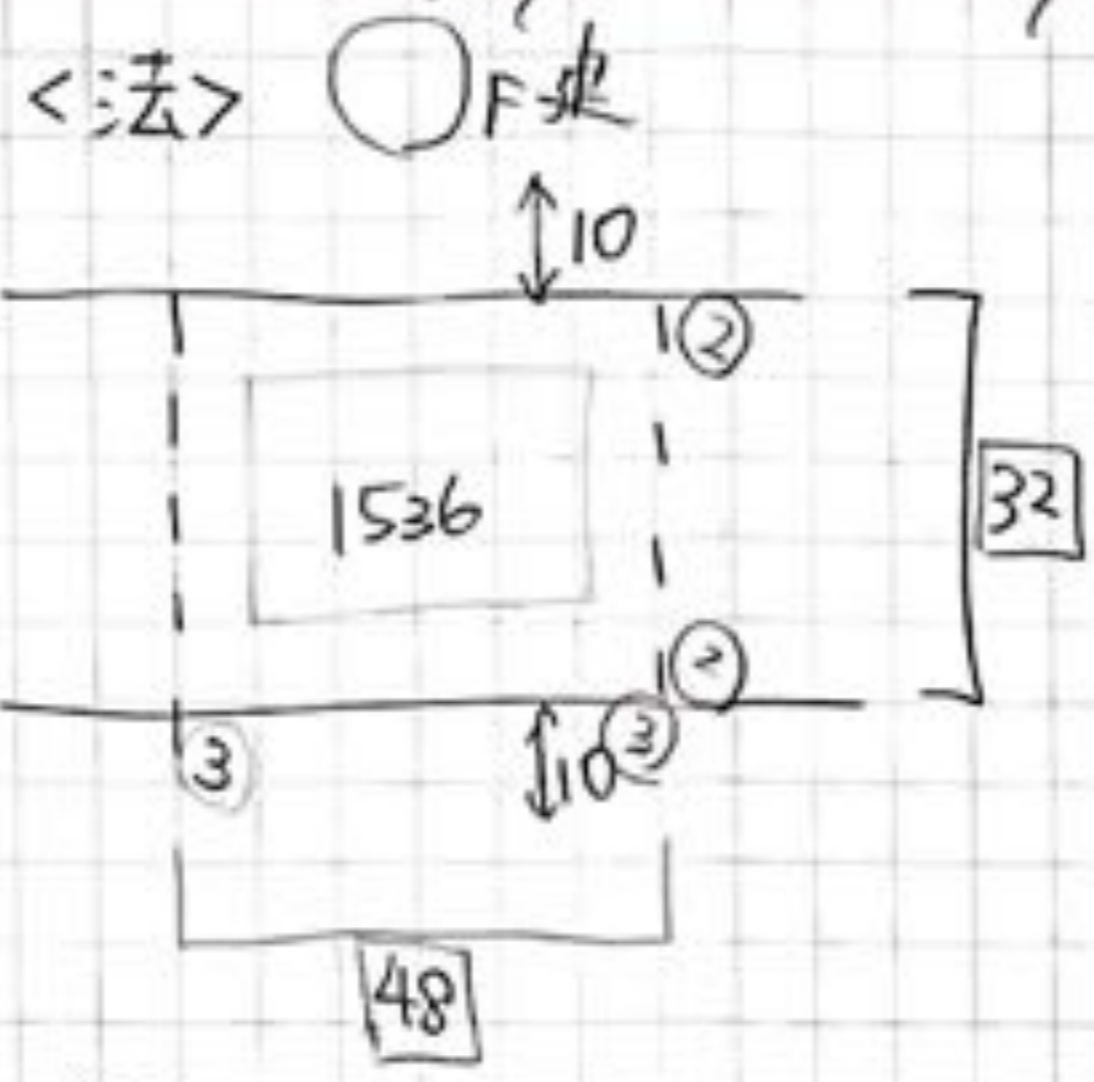
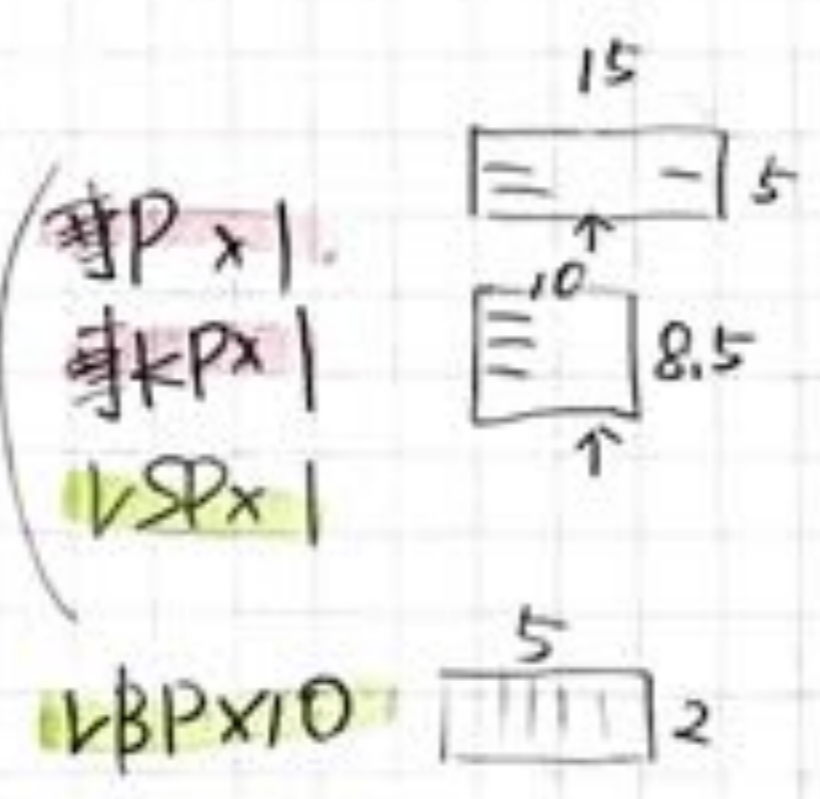
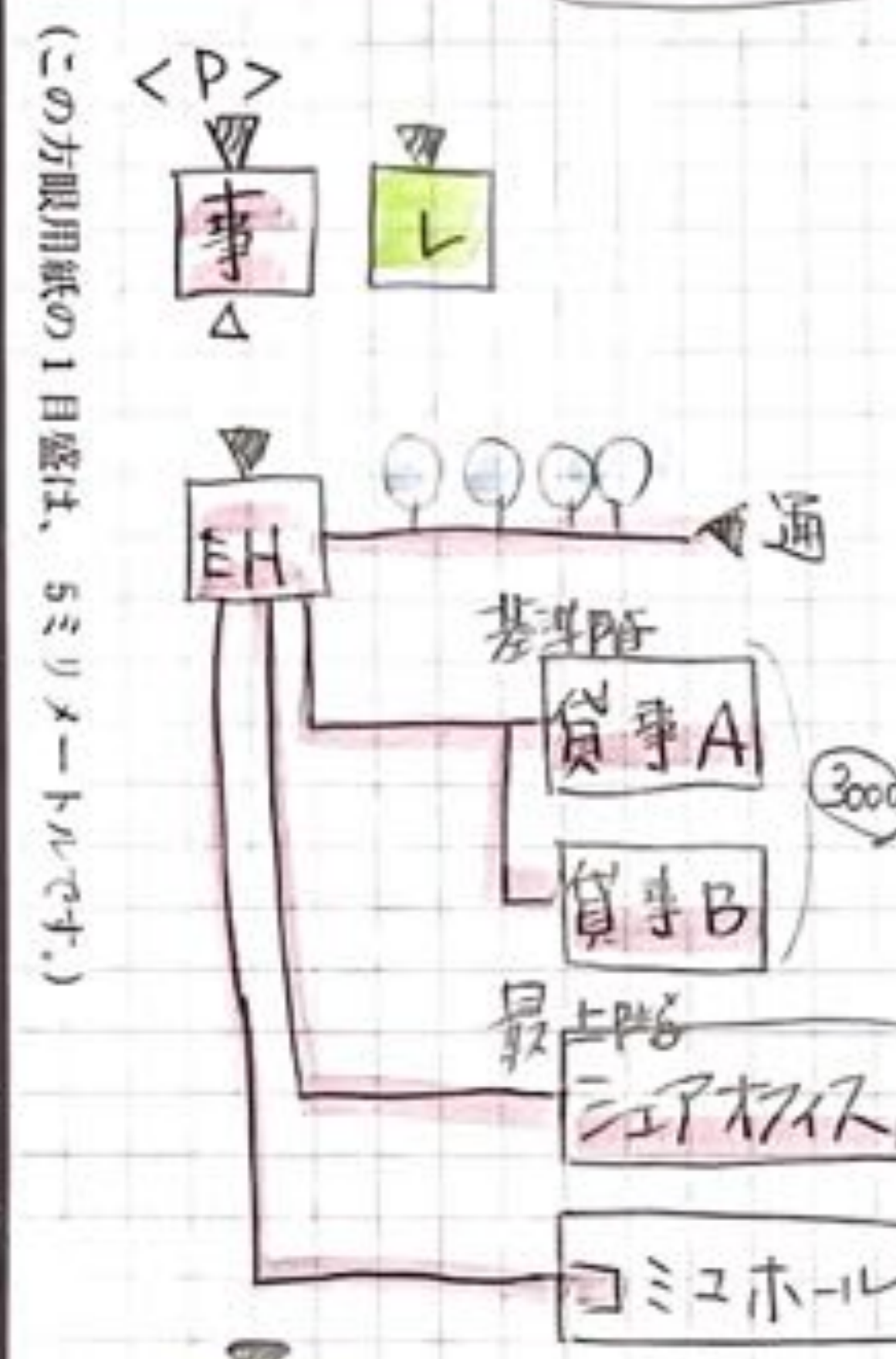
ch2!

1級建築士試験「設計製図」の試験 下書用紙

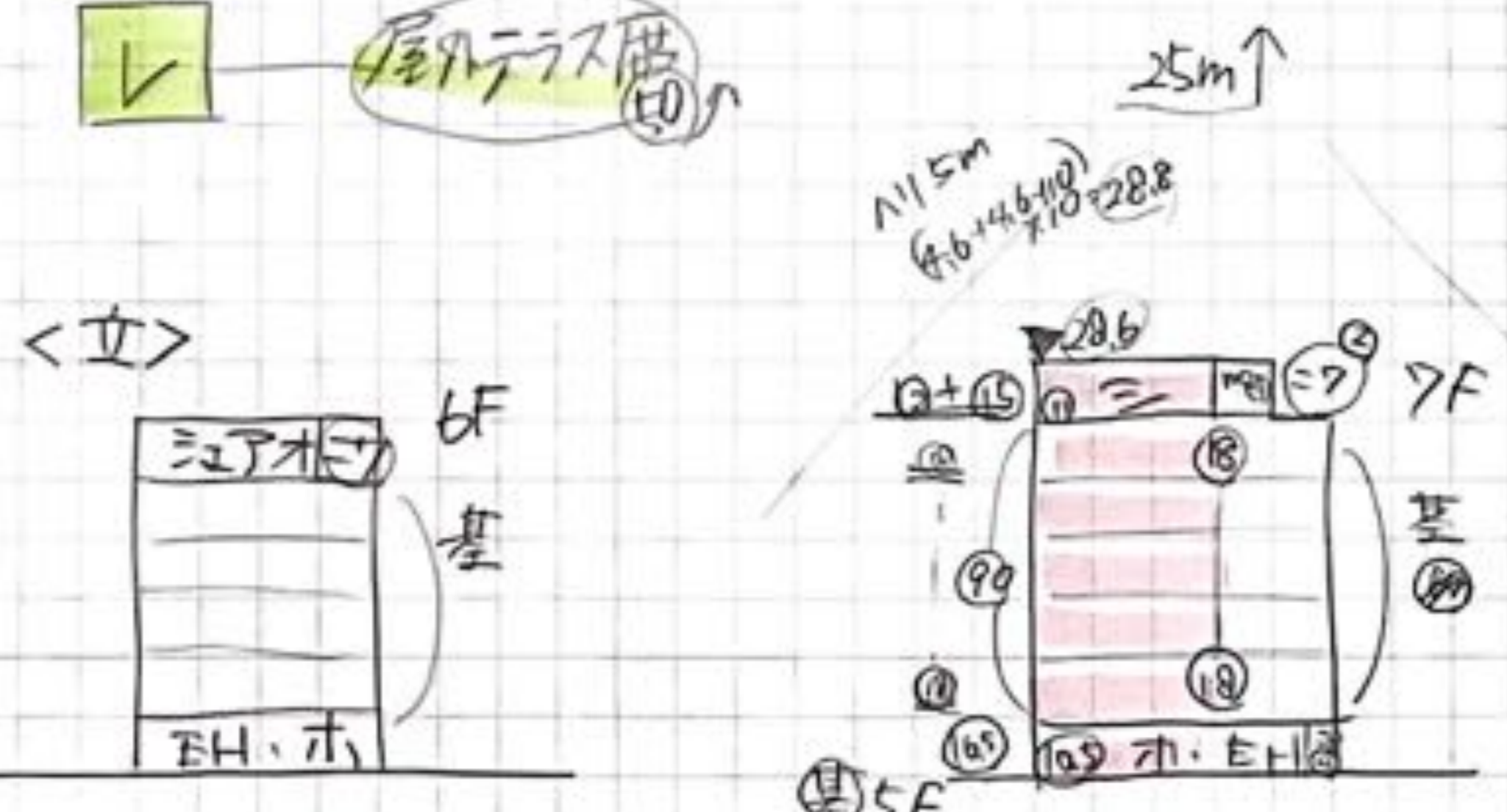
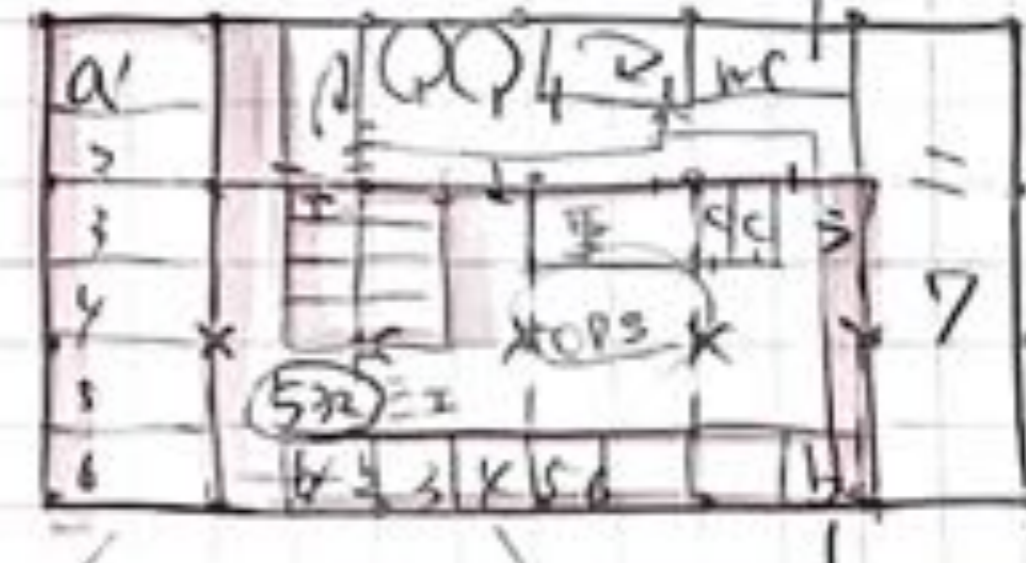
1級建築士試験「設計製図」の試験 下書用紙

2023.2.1 R4本試験 解説

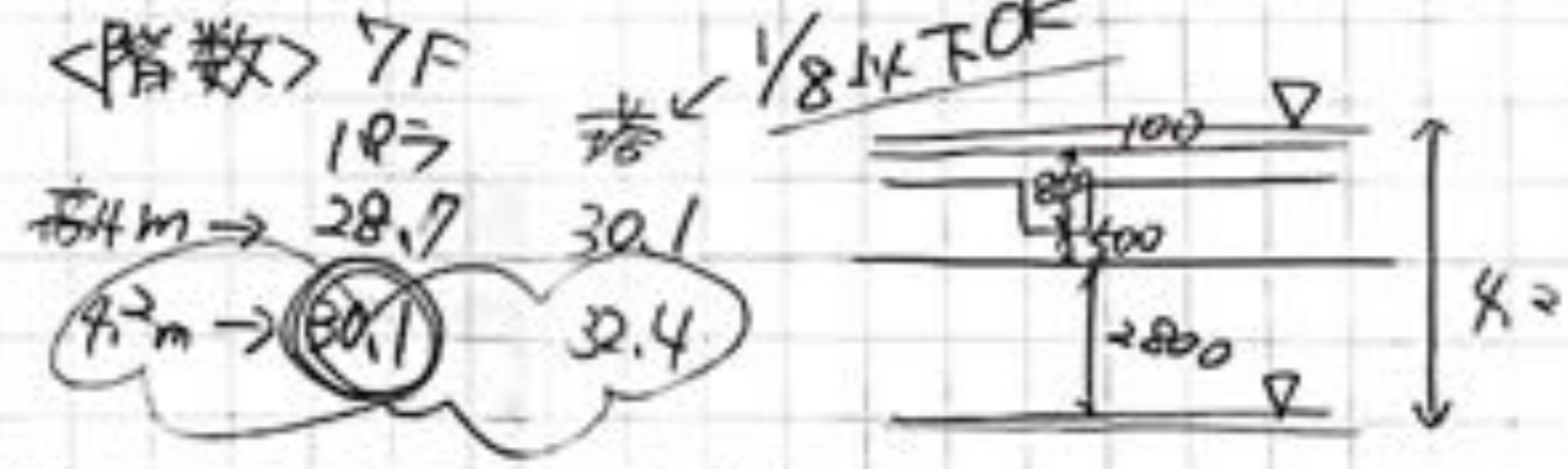
| | |
|------|--|
| 受験ID | |
| 氏名 | |
| 教室名 | |
| 教室 | |
| 担当講師 | |
| 課題名 | |



$(336 \times 2) \times 5$
 $3360 > 3000$
 $(336 + 350) \times 5$
 $= 3430 > 3000$

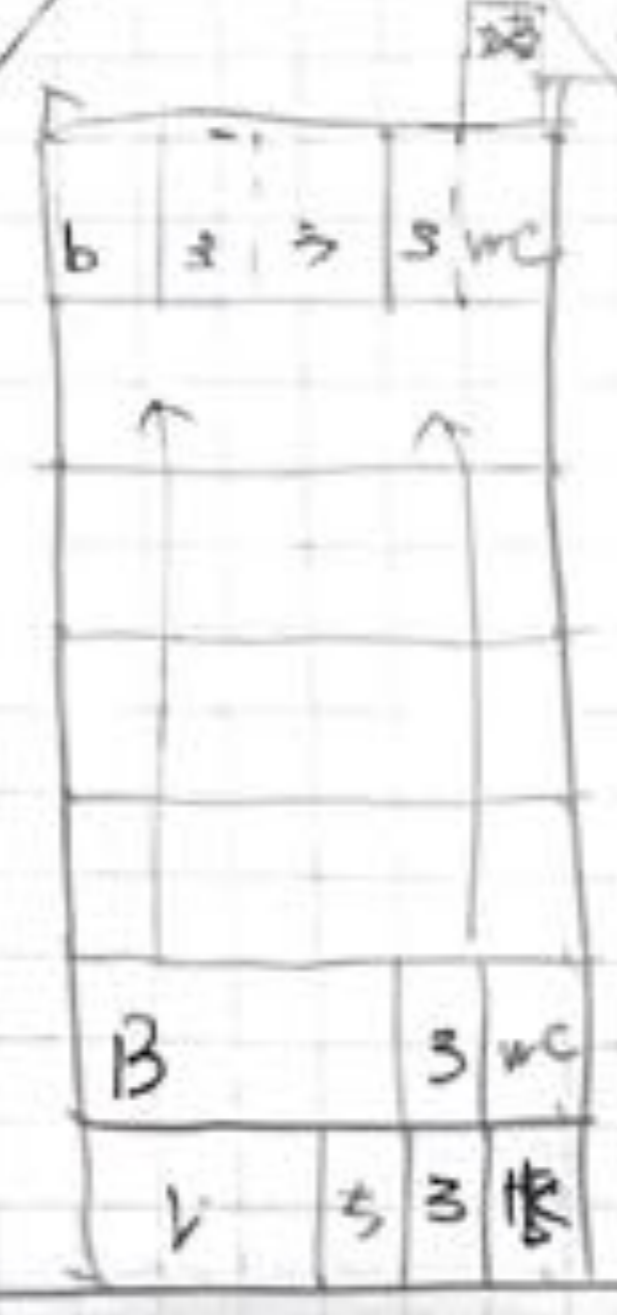
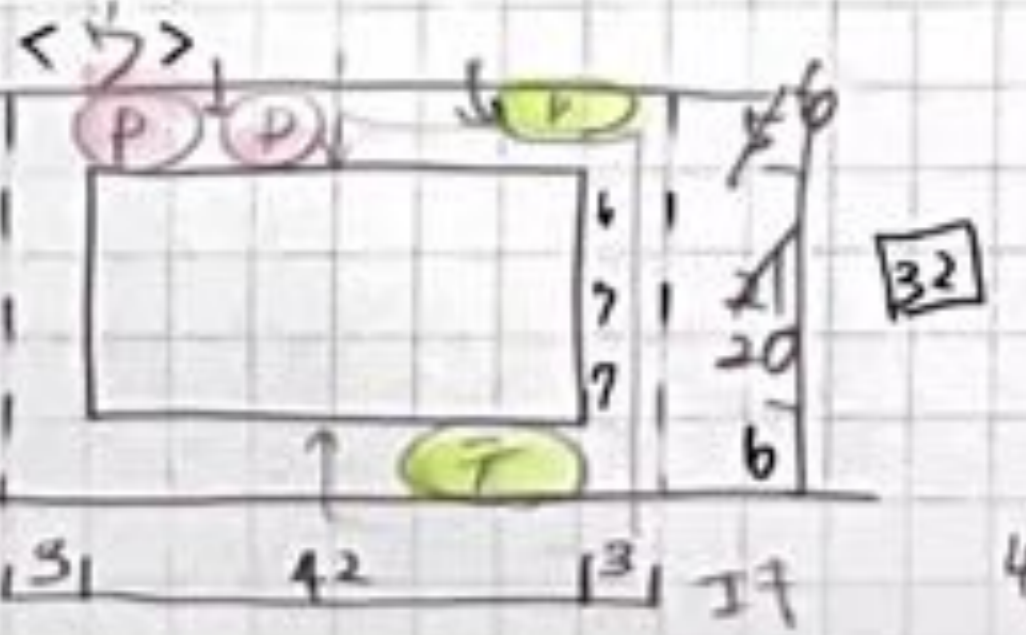
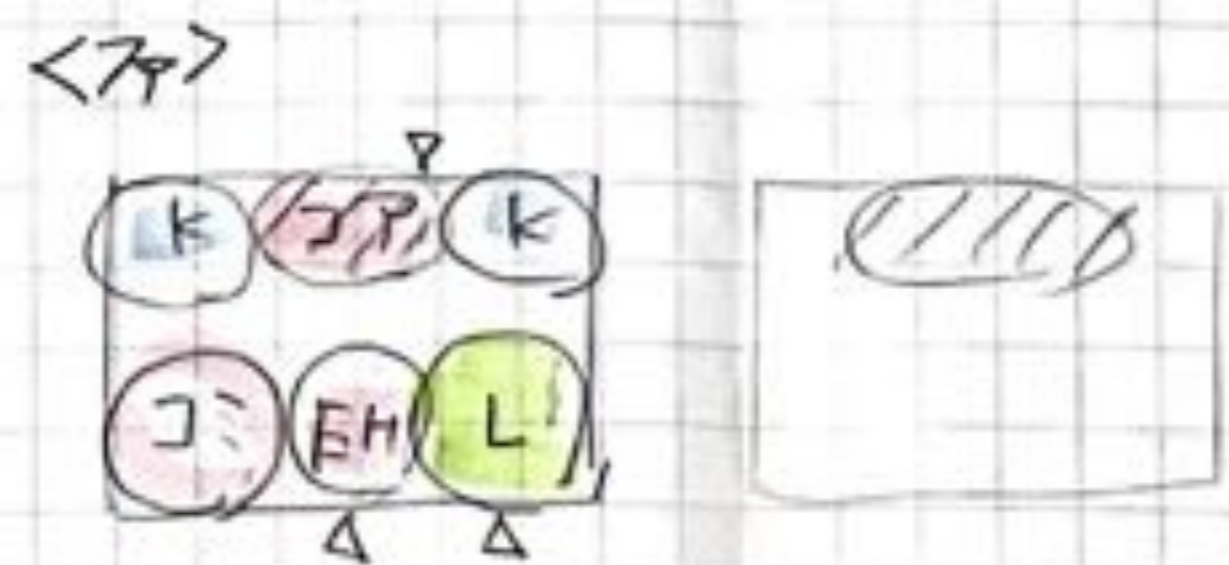
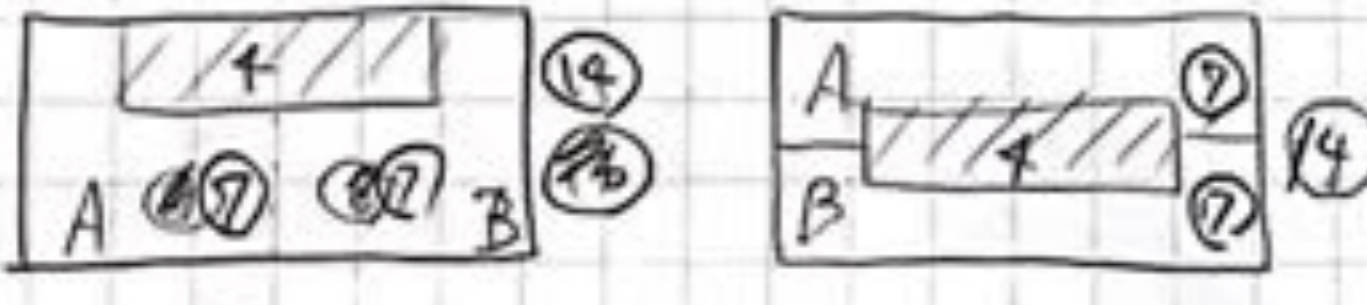


- Ⓚ 1382.4m² ②
- Ⓨ 7680m² ⑤
- Ⓢ 0 → 15
- 1 → 18
- 2 → 21
- 3 → 24
- 4 → 27
- 5 → 30
- 6 → 33



11本柱 6m x 6m 子 = 東西で 8m 使う。

<基> A・B = 3000 ⑥ → ⑭ x 5 = ⑦② 7m x 7m じゃ不足!!



$\text{Ⓚ } 43 \times 20 = 860 \text{ m}^2 \text{ ok}$
 $\text{Ⓢ } 36 \times 20 = 720 \text{ m}^2$
 $\neq 43 \times 20 = 860 \times 5 = 4300$
 $\text{1F } 42 \times 20 = 840$

床 5880 ok
 $\neq A+B$ 3430m²
 1=39